

**LOIN**

**Country Style Ribs,**  
423 Boneless



- Order Specifications**
- Bone-in or boneless
  - Rib quantity

**Tenderloin**  
415 Side Muscle On



- Order Specifications**
- Side muscle on or off
  - Weight

**Sirloin Roast**  
410A Pork Loin, Sirloin End



- Order Specifications**
- Bone in or boneless
  - Portion
  - Size

**Loin Roast**  
413A Boneless, Roast



- Order Specifications**
- Portion
  - Size

**Rack of Pork**  
412G Pork Loin, Center Cut  
Rib End



- Order Specifications**
- Size
  - Frenched
  - PSO 8-11 Rib Rack

**Center Rib Roast**  
412E Pork Loin, Boneless  
Center Cut



- Order Specifications**
- Size
  - Weight

**Chopped Loin**  
435B 1 to 1.5 inches



- Order Specifications**
- Cut size
  - Weight

**LEG**

**Ham Shank**  
401A Fresh Ham, Short Shank



- Order Specifications**
- Weight range
  - Fat thickness

**Fresh Ham**  
401 Pork Leg, Bone-in



- Order Specifications**
- Skin on or off
  - Weight range
  - Fat thickness

**Smoked Ham**  
501 Cured Ham, short Shank,  
Bone-In



- Order Specifications**
- Size
  - Weight range
  - Fat thickness

**Fresh Ham Roast**  
402B Ham Roast, Boneless



- Order Specifications**
- Size
  - Weight range
  - Fat thickness

**SHOULDER**

**Shoulder Roast**  
406 Boston Butt, Bone-in



- Order Specifications**
- Size
  - Weight
  - Fat content

**Blade Pork Roast**  
406A Pork shoulder, Boston  
Butt,  
Boneless



- Order Specifications**
- Size
  - Weight
  - Fat content

**Pork Shoulder**  
405 Picnic Shoulder Roast,  
Bone-In



- Order Specifications**
- Size
  - Weight
  - Fat content

**Pork Shoulder, Roast**  
405A Picnic Roast, Boneless



- Order Specifications**
- Size
  - Weight
  - Fat content

**RIBS**

**Pork Spareribs**  
416 Rack of 11 Ribs



- Order Specifications**
- Weight
  - Size

**Pork St. Louis-Style Ribs**  
416A Rack of 11 Spare Ribs, St. Louis  
Cut



- Order Specifications**
- Weight
  - Size
  - Cut

**Back Ribs**  
422 Loin, Back Ribs



- Order Specifications**
- Skin on or off
  - Weight
  - Size

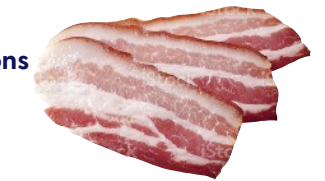
**BELLY**

**Fresh Pork Belly**  
408 Fresh Whole Belly



- Order Specifications**
- Skin on or off
  - Bone-in or boneless

**Bacon**  
539 Sliced, Cured Bacon



- Order Specifications**
- Pack type
  - Curing
  - Smoking
  - Ct. per pound

**MISC.**

**Ground Pork**  
496 Bone and Cartilage Free



- Order Specifications**
- Lean/Fat ratio
  - Weight

**Pig Feet**  
420 Pig Feet, Front



- Order Specifications**
- Quantity
  - Split

**Hock**  
417A Shoulder Hocks



- Order Specifications**
- Size
  - Skin on or off